

H4030



GoSmart Home Wireless Battery Video Doorbell IP-09D with Wi-Fi and Solar Panel



Table of Contents

Safety instructions and warnings	2
Contents of the package	3
Technical Specifications	3
Description of the device	5
Installation and assembly	6
Icons and indicator lights	9
Controls and functions	11
Troubleshooting FAQ	12

Safety instructions and warnings



Before using the device, read the instructions for use.



Observe the safety instructions in this manual.

EMOS spol. s r.o. declares that the product H4030 complies with the essential requirements and other relevant provisions of the directives. The equipment can be operated freely in the EU.

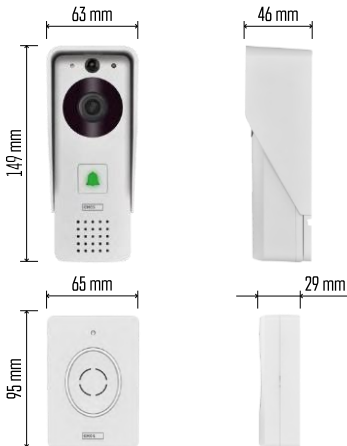
The Declaration of Conformity can be found on the website <http://www.emos.eu/download>.

The equipment can be operated on the basis of general authorisation No. VO-R/10/07.2021-8 as amended.



Contents of the package

Wifi doorbell
 Body cover (rain shield)
 Wireless doorbell Solar panel
 18650 Li-ion battery
 Connecting cable
 Installation material - screws Manual



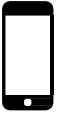
Technical Specifications

Outdoor unit:

Power: 2,200 mAh Solar panel: 1.5 W Resolution: 1,920 × 1,080 Lens: 2.69 mm JX-F37 Lens angle: 110°
 PIR distance: up to 4 m
 Storage: SD card (max. 64 GB), Cloud storage Degree of protection: IP44
 Maximum number of users: 10
 APP: EMOS GoSmart for Android and iOS
 Connectivity: 2.4GHz Wi-Fi IEEE 802.11b/g/n
 Frequency band: 2.400-2.4835 GHz

Wireless doorbell:

Power: 3× AA (LR6) 4.5 V DC
 Frequency: 433.92 MHz ±250 kHz Distance: approx. 80 m (open space)



✓ 2.4 GHz

5 GHz ✗



Notice

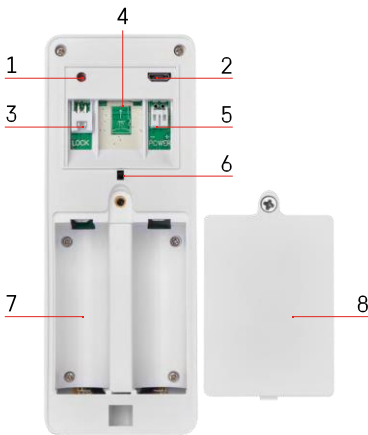
The camera only supports 2.4 GHz Wi-Fi (5 GHz is not supported).



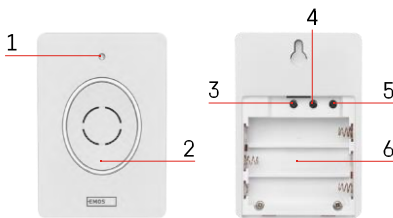
Description of the device

Description of the outdoor unit

- 1 - Microphone
- 2 - PIR sensor (motion sensor)
- 3 - Light sensor
- 4 - Lens
- 5 - IR illuminator
- 6 - Call button with status LED:
 - The LED flashes red and green: Charging battery.
 - LED flashing red: Waiting for network configuration.
 - The LED flashes green: the network is being configured.
 - The LED is green: it is working properly.
 - The LED is yellow: External power supply, charging complete, no batteries detected (note: If no batteries are installed - the indicator is only yellow).
 - LED not lit red and green: weak power supply in standby mode.
- 7 - Speaker



- 1 - RESET button
- 2 - Micro USB port
- 3 - Port for lock control
- 4 - TF card/Micro SD card slot (max. 64 GB, Class 10, FAT32)
- 5 - Port for power supply
- 6 - Anti-theft alarm switch
- 7 - Space for batteries
- 8 - Battery compartment cover

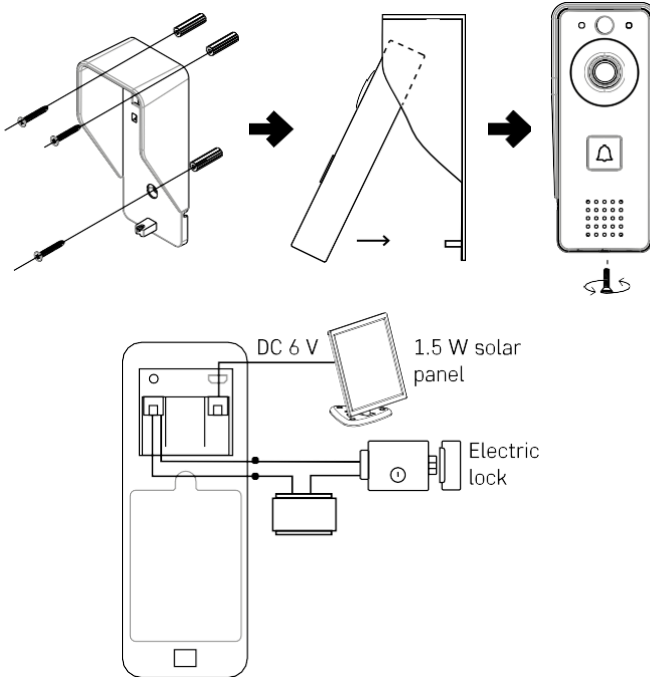


Wireless doorbell description

- 1 - Status LED:
 - The LED flashes red: it is working properly.
 - LED is red: voltage drop below 3.3 V.
- 2 - Speaker
- 3 - Working mode
- 4 - Melody selection
- 5 - Melody volume:
 - Low
 - Medium
 - High
- 6 - Space for batteries

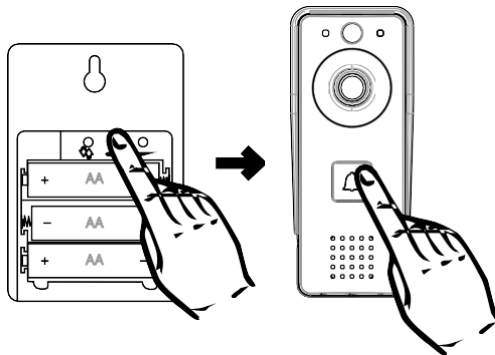
Installation and assembly


Outdoor unit installation



1. Attach the body cover (rain screen) of the video doorbell to the wall using the screws provided.
2. The optimum height for installing a video doorbell on a wall is 140-160 cm from the ground.
3. Make sure the PIR sensor is out of direct sunlight.
4. Connect the power supply to the video doorbell input as shown in the diagram.
5. Attach the video doorbell using the screw on the bottom according to the diagram.

Installing a wireless doorbell



1. Insert the batteries into the doorbell.
2. Press the  button for 3 seconds, the Ding-Dong sound will be heard.
3. Then press the ring button on the Wi-Fi doorbell, the unit will sound and at the same time light blue - pairing was successful.

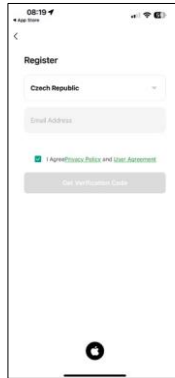
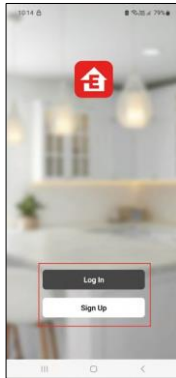
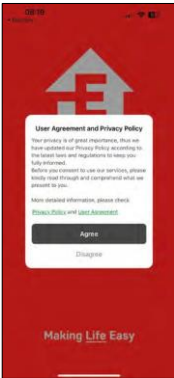
Pairing with an app

Installing the EMOS GoSmart app



The app is available for Adroid and iOS via Google play and the App Store. Please scan the QR code to download the app.

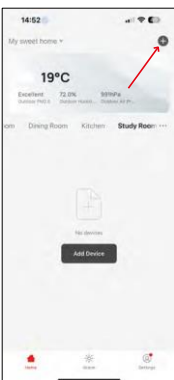
EMOS GoSmart mobile app



Open the EMOS GoSmart app and confirm the privacy policy and click I agree. Select the registration option.

Enter the name of a valid email address and choose a password. Confirm your consent to the privacy policy. Select register.

Pairing with an app

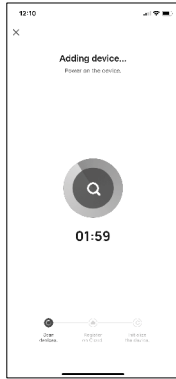


Select Add device.

Select a GoSmart product category and select the Video Doorbell IP-09D.

Reset the device using the RESET button on the back of the camera and continue with the application.

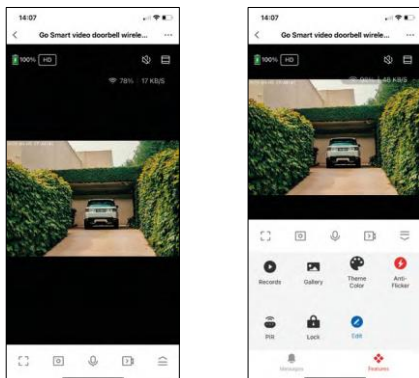
You'll hear a welcome message that says "please wait" at the end. Wait for approximately 5 seconds and continue.



Enter the name and password of your Wi-Fi network. This information remains encrypted and is used to allow the camera to communicate with your mobile device remotely.
A QR code will appear on the display of your mobile device. Place the QR code in front of the camera lens.
Confirm that you have heard the beep for a successful pairing. The device is automatically found.

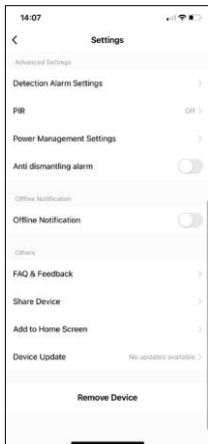
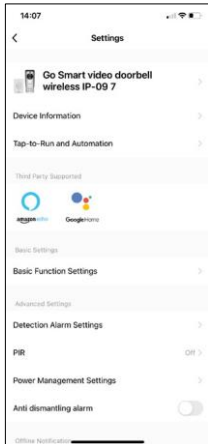
Icons and indicator lights

Description of controls in the application



...	Advanced settings (described in more detail in the following section)
📶 98% 48 KB/S	Signal quality and speed
🔇	Mute
📏	Zoom in
🖼️	Full screen mode
📷	Take pictures using the app and save them to your mobile album
🗣️	Speak
📹	Take a video using the app and save it to your mobile album
☰	Expand menu
▶️	To play a video stored on an SD card
📂	See videos and photos taken by the app
🌙	Light mode / dark mode
⚡	Anti-Flicker mode (If the camera surroundings cause your video to flicker in the app)
📶	Motion sensor settings
🔒	Unlocking / locking the lock
🔧	Edit icons + add control of another device
✉️	Message display (Motion detection...)

Description of extension settings



- Device information - Basic information about the device and its owner
- Tap-to-Run and Automation - View scenes and automations assigned to the device. Creation of scenes is possible directly in the main menu of the application in the section "Scenes". For example, the H4030 could be automated to turn on motion detection and dark mode between 6pm and 7am.
- Basic Function Settings - Enable/disable basic control functions such as automatic screen rotation or watermarking with time and date display. Another important setting is the ability to select one-way or two-way communication.
- Detection Alarm Settings - Alarm settings, option to enable human body filtering. This feature is important if you don't want the device to alert you to every movement, but only when it recognizes a person. (This prevents alarms when a car, animal, or trees are passing by).
- PIR - Switching on/off the motion sensor and setting its sensitivity.
- Power Management Settings - Displays the current battery status, power source, and turns on notifications if the battery drops below a specified percentage.
- Anti dismantling alarm - When enabled, this function will sound a siren when the bell is removed from its housing. The app will also notify you with a notification and take a picture at that moment. This is an anti-theft security feature.
- Offline Notification - To avoid constant reminders, a notification will be sent if the device remains offline for more than 30 minutes.
- FAQ & Feedback - View the most common questions along with their solutions plus the ability to send a question/suggestion/feedback directly to us
- Share Device - Share device management to another user
- Add to Home Screen - Add an icon to your phone's home screen. With this step, you don't have to open your device through the app every time, but just click directly on this added icon and it will take you straight to the camera view
- Device update - Device update. Option to enable automatic updates
- Remove Device - Remove and evaporate the device. An important step if you wish to change the owner of the device. After adding the device to the app, the device is paired and cannot be added under another account.

Controls and functions


Recording to SD card

One of the basic functions of the home security system is the SD card recording function.

The camera is battery powered, so to save battery and SD card space, it does not record continuously, but only a few seconds of footage once the PIR sensor detects motion.

The camera supports SD cards with a maximum size of 64 GB in FAT32 format. However, 32 GB or 16 GB SD cards will also suffice. When the SD card is full, the recordings are automatically overwritten.

Instructions on how to enable the SD card function:

1. Insert the Micro SD card into the appropriate slot under the rubber isolation on the back of the camera.
2. Open the advanced device settings and select "Storage settings".
3. Format the SD card. **WARNING:** Do not turn off the application or interrupt the process when formatting the SD card.
4. Switch on the PIR sensor and set the required sensitivity. In the settings there is an option to turn on/off human body recognition to prevent alarms when the camera detects, for example, the movement of an animal or a tree. Using
You can also designate an "Activity Area" where you want the camera to detect motion (for example, you don't want the camera to alert you to every car that drives down the road that the camera can see).
5. When the camera detects motion, it will also record a few seconds of footage, which can be found in  the icon:



Troubleshooting FAQ

I can't get the devices to pair. What can I do?

- Make sure you are using a 2.4GHz Wi-Fi network and have a strong enough signal
- Allow the app all permissions in the settings
- Make sure you are using the latest version of the mobile operating system and the latest version of the app

They can hear me outside, but I can't hear the sound outside / I can hear the sound outside, but they can't hear me.



- Make sure you have granted all permissions to the app, especially for the microphone.
- One-way communication can also be a problem. If you see this icon at the bottom:  it means that the device is set to one-way communication.
- To f i x this, go to the "Basic Function Settings" menu and set "Talk mode" to "Two-way talk". This menu can be found in the extension settings (see chapter "Description of extension settings").
- The correct icon for two-way communication looks like this: 

I'm not getting notifications, why?

- Allow the app all permissions in the settings
- Turn on notifications in the app settings (Settings -> App notifications)

What SD-Card can I use?

- SD card with a maximum storage capacity of 64 GB and a minimum speed class of CLASS 10 in FAT32 format.

When the SD card memory is full, are the oldest records automatically overwritten or does the user have to manually delete them?

- Yes, the records are overwritten automatically.

Who all can use the equipment?

- Facilities must always have an admin (owner)
- Admin can share the device with the remaining household members and assign them rights